

IS MONEY TIGHT?

¿NO LE ALCANZA EL DINERO?

What is **FoodShare** and the **QUEST CARD?**

FoodShare helps stretch your budget by depositing money on a debit-like card once per month to help buy groceries.

FoodShare ayuda a aumentar su presupuesto a través de ingresar dinero en una tarjeta una vez al mes para ayudar a comprar la comida.



ELIGIBILITY

LÍMITES DE INGRESOS BRUTOS

You may qualify if your household's gross monthly income is less than...

		\$1,962
		\$2,656
		\$3,350
		\$4,042

Income guidelines are valid through September 30, 2016



1-877-366-3635

GetAQuestCard.org

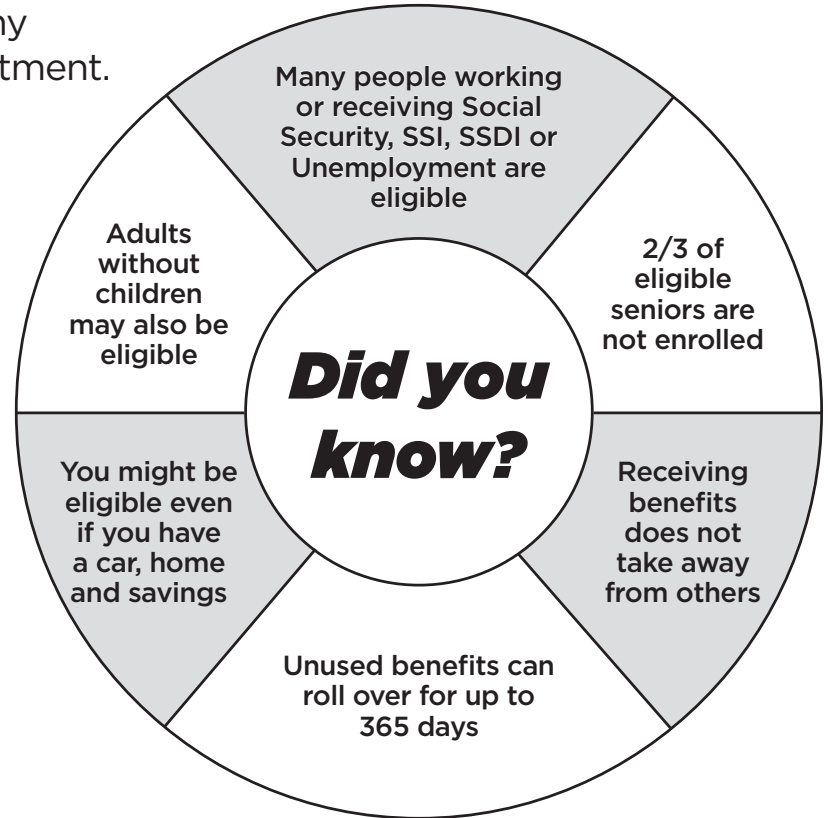
FEEDING[®]
WISCONSIN

Call the toll-free FoodShare Helpline with any questions or to set up a confidential appointment.

1-877-366-3635

Applying is fast, easy & confidential!

With one phone call you will learn if you might be eligible for FoodShare benefits and can make an appointment in your area for free help with an application.



The FoodShare Helpline is a service of Feeding Wisconsin and its member food banks. In accordance with Federal law and U.S. Department of Agriculture (USDA) policy, this institution is prohibited from discriminating on the basis of race, color, national origin, sex, age, or disability. To file a complaint alleging discrimination, write USDA, Office of Adjudication, 1400 Independence Avenue SW, Washington, DC 20250-9410 or call, toll free, (866) 632-9992 (Voice). Individuals who are hearing impaired or have speech disabilities may contact USDA through the Federal Relay at (800) 877-8339 or (800) 845-6136 (Spanish).

