

Connected & Empowered Food System Panel Discussion

October 20, 2021

Agenda/Reminders

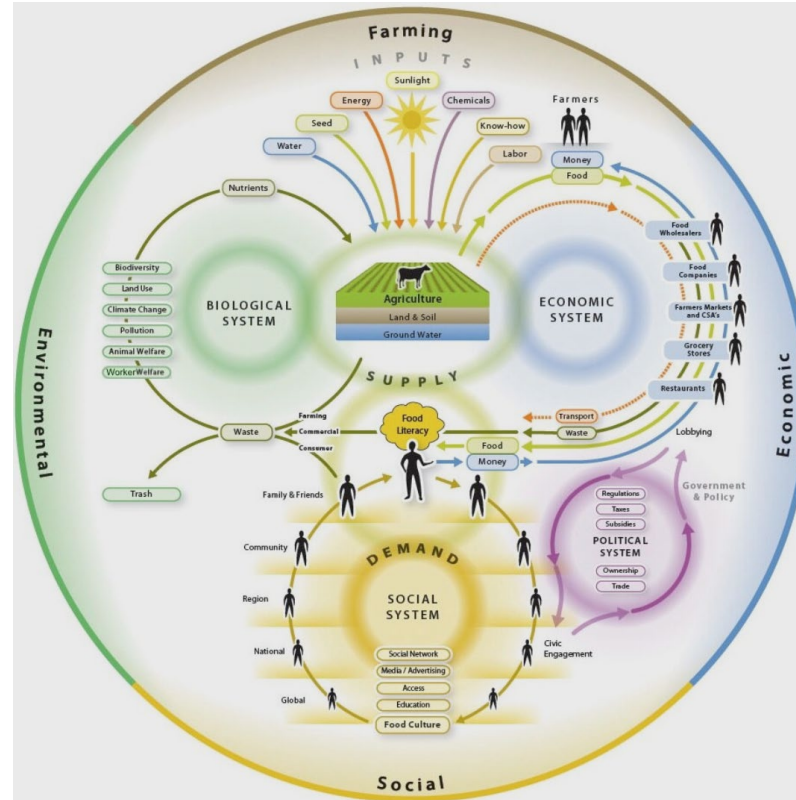
- Agenda
 - Introductions
 - Complexity of the Food System
 - The Tribal Elder Food Box Program
 - Kenosha County Efforts
 - Key Learnings
 - Q & A

- Please use the chat for questions and comments.
- Please feel free to ask questions throughout the panel discussion.

Panelists

- Gary Besaw, Menominee Nation
- Jeff Joslyn, Feeding America of Eastern Wisconsin
- Shawn Bartholomew, Chippewa Valley Produce
- Amy Greil, UW-Madison, Division of Extension, Kenosha County

Complexity of the Food System



Why Connections and Relationships Matter?

1. Systemic/contextual awareness/being a part of something larger
2. Inspiration and support
3. Learning and skill development
4. Access to broader information, funding, and expertise
5. Amplification of one's voice and efforts
6. Joint projects that strengthen relationships for the future

Tribal Elder Food Box Project



Menominee Food Sovereignty



- Culturally-informed practices
- Legal framework
- Zoning Changes
- Direct Services and training
- Facility and resource development
- Economic development



Tribal Food Sovereignty Broadly

- Expanding efforts to build capacity for feeding ourselves
- Challenge is rebuilding from centuries of deliberate efforts to undermine Tribal food systems
- Efforts range from production to policy



Tribal Elder Food Box Program



Tribal Elder Food Box Program

- Pilot funded through \$427,800 Feeding America National Regional Agri Food Distribution grant
- 900 boxes of fresh produce and proteins distributed to Tribal Elders of Oneida, Menominee, and Red Cliff Nations
- 12 distributions between every other week June – December
- Product sources from Tribal and local producers



Learn More:

<https://feedingwi.org/programs/tribalfoodsecurity/>





Food Distribution Program on Indian Reservation – 638 Self-Determination Demonstration Project

- Authorized under 2018 Farm Bill
- USDA award will allow for Tribal control in selecting local and regional Tribally grown foods to be purchased and included in FDPIR commodity distributions to Tribal Citizens
- 7 projects were awarded nationally for this pilot.
- \$276,413 was awarded to the Oneida and Menominee Nation for this joint project



FDPIR 638 Intertribal Proposal

Purpose: Provide a model for indigenous communities to increase their capacity for self governance, including addressing their own unique economic disparities and health outcomes.

Food: Traditional and regional foods procured

Vendors: Tribal producers in Great Lakes Region

Economic Development: Potential for new and more producers

Access to Market: Historical barriers for tribal producers removed



Whitefish
Lake Trout



Ground Beef
Ground Bison
Beef Roasts



Wild Rice



Apples

Partnership Building for the Future

- Supporting both nutrition security of Tribal Members and economic/agricultural development of Tribal producers
- Looking for sustainable funding for Tribal Elder Box Program to continue to purchase, repack, store, and transport perishable foods as well as shelf-stable.
- Opportunities for sharing knowledge (supply chain, food systems logistics)
- Opportunities for building stronger Wisconsin and Regional food system relationships – Tribal producers and nontribal local producers
- Intertribal cooperation and self governance
- Opportunities for additional partnerships and funding



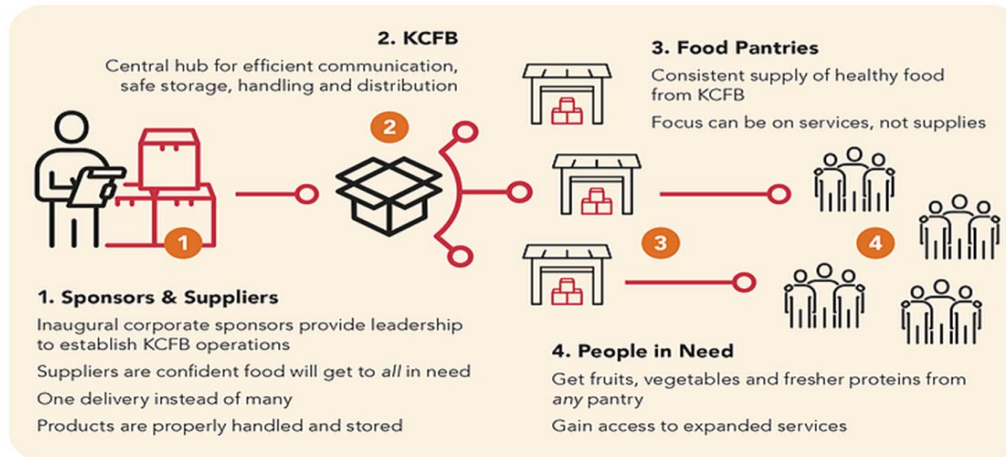
Partnership Lessons Learned

- Regular and open communication
 - Weekly partner calls
 - Communicating to leadership to build buy-in
- Partnership gives space to many experts and opportunities to learn from one another
- Support solutions that are rooted in community
- Moving at the speed of partnership
- Taking care of all partners



KENOSHA COUNTY FOOD BANK

An organization serving as a depot to source, store and distribute emergency food on behalf of emergency food distribution programs.



KCFB VISION & MISSION

Healthy Food For All

To be a bridge between healthy food resources and a network of hunger-relief organizations



THE (ORIGINAL) KCFB PANTRY NETWORK

The Kenosha County Food Bank is currently engaged with seven food pantries/meal programs that will remain the recipients of all of KCFB's donated food and non-food products.

**GRACE WELCOME
CENTER**

SALVATION ARMY

SHALOM CENTER

SHARING CENTER

**TWIN LAKES AREA
FOOD PANTRY**

VIVENT HEALTH

**WOMEN AND
CHILDREN'S
HORIZONS**

Kenosha County Food Bank announces partnership agreements with two area organizations



The Kenosha County Food Bank has reached partnership agreements with two local organizations, Feeding America Eastern Wisconsin and Racine County Food Bank, KCFB organizers announced on Friday.

Under the partnership, KCFB will serve as one of the regional redistribution centers for Feeding America Eastern Wisconsin, expanding its network and bringing additional resources to those in need in Kenosha County.





Keep In Mind, Networks “Work” When...

Giving First, Not Taking

The key to generativity is generosity, to being first to make a humble offering—of ideas, truth, courage, attention, and other resources. The fear of having an already scarce pie become further divided is fulfilled by the failure to give, to give freely and fully of our experience, gifts and excess capacities

Contribution Before Credentials

‘Expertise’ and seniority can serve as a bottleneck and buzzkill in many networks and organizations, where ego gets in the way of excellence and vital experience. If we are looking for new and better thinking, it should not matter from whence it comes.

Intricacy and Flow, ~~Bottlenecks and Hoarding~~

A constant threat to vitality is rigidity, hoarding and exclusion

Self-Organization and Emergence versus ~~Permission and Predictability~~

Network effects and change stem from many different experiments rather than looking for the single best answer.

Taken from Curtis Ogden at the Interaction Institute for Social Change

Questions?

**“Partnerships (and this work) will move
at the speed of trust.”**

-Tamarack Institute